

# SLC-2000 Series Digital Video Colposcope



Capture card & Software    Portable Workstation    Table-top Workstations

## INNOVATIONS:

Goldway SLC-2000 series video colposcopes have many innovative and patented technologies, which enable gynecologists to observe the cervical examinations on a video monitor and perform image zooming, electronic green filter, Magn, and timer display. In addition, with image workstation, image data can be acquired, saved, edited into diagnosis reports and analyzed. It is helpful for observing and recording examination and surgical treatment procedures.

## FEATURES:

- High resolution CCD and fast auto focusing technology
- Maintenance free and cold LED light source
- Electronic green filter
- Image freeze
- Real-time display of magnification and timing of acetic acid and iodine reaction tests
- Powerful image software and workstation system

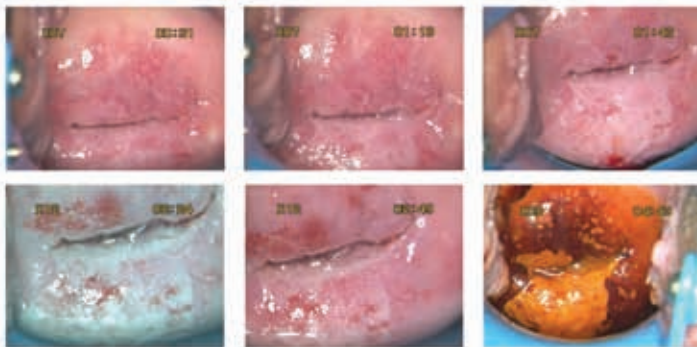


IEC60601-1  
ISO9001 & EN46001 & ISO 13485 Certified



# SLC-2000 Series Digital Video Colposcope

## Real-time display of acetic acid and iodine reaction tests



## Colposcope camera of multifunctions and ease of use



Auto fine focus, zoom, image freeze, green filter, magnification and timer display all in one hand-held unit.

- Unique electronic green filter to enhance vascular image display without decrease of illumination.
- Unique acetic acid test timer to detect the low/high-grade CIN and control the quality of image capture.
- Advanced and fast auto-focusing technique to ensure clear image under high magnification status.
- Proprietary LED cold light source. It displays genuine tissue color and tone.

## DVIS Multi-function image processing software package and workstation

Software package offers view examination, case report, case management and system maintenance.

- Integrated management of image capture, observation, processing, saving and printout
- Powerful comparison and statistic analysis function
- Printing of multi-format diagnosis report
- Colposcopy REID evaluation
- Case data management based on SQL server management
- Optional image processing workstation (table-top or laptop)



Diagnosis Report Printout



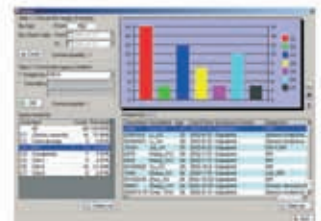
Case report module



Observation module



Analysis module



Statistics module

## Specifications:

Model	SLC-2000A	SLC-2000B
Resolution	1/4" super HAD color CCD 440000 pixels	1/4" super HAD color CCD 680000 pixels
Optical zooming	1-18x (typ.)	1-25x (typ.)
Image output interface	S-Video PAL/NTSC mode	
Focus distance	150-350mm	
Field of view	φ=10-150mm	
Depth of view	5-120mm	
Focus mode	Fast auto focus	Fast auto focus or manual
Light source type	Cold LED light source	
Dynamic timing control	Real-time display of acetic acid and iodine reaction tests	
Image magnification	Button control and real time display	
Image freeze control	Button selection	
Floor stand type	Vertical stand (900mm-1300mm) and swing arm	
Power supply voltage	AC110-220V	



SHENZHEN GOLDWAY INDUSTRIAL, INC  
Add: 5F Bldg. 10, Zhongxing Gongye Town, Chuangye Road,  
Nanshan District, Shenzhen. 518054, P.R. China  
Tel: 86-755-26055151 Fax: 86-755-26068806 26813593  
Email: zjcgsm@szonline.net market@goldwayinc.com

GOLDWAY(US), INC.  
Add: 200 Broad Hollow Road, Suite 207 Melville, NY 11747, USA  
Tel: 1-631-393-5023 Fax: 1-631-584-6452  
www.goldwayhealthcare.com  
E-mail: goldway@optonline.net