



[www. goldwayhealthcare. com](http://www.goldwayhealthcare.com)

SLC-2000B

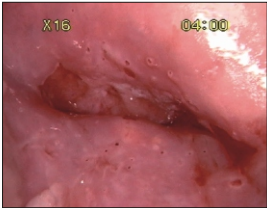
Video Colposcope

- High speed auto focusing
- Medical-grade cold LED light source
- Up to 36X optical magnification
- Multi-grade electronic green filter
- Image freeze mode
- Real-time indication of magnification and acetic acid and iodine reaction timer
- Auto and manual focus
- Vertical or Swing Arm stand camera mount with attached power supply



SLC-2000B Video Colposcope

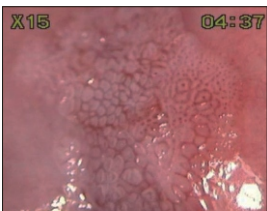
Superior Depth of View



Crisp Image with True Color



Outstanding Optical Magnification



Great Electronic Green Filter



Easy to use advanced camera technology with integrated functions enhance diagnostic ability



- High resolution CCD camera provides clear images
- Proprietary medical-grade cold LED loop group light source enables display of true tissue color and cellular tone
- Fast auto focus or manual focus function provides a clear image during examinations or surgical procedures
- Up to 36X magnification with real-time display allows in-depth tissue examination
- Electronic multi-grade green filter enhances vascular image display without reducing illumination
- Image freeze function enables detailed tissue analysis
- Dim light imaging and image reflection subtraction tools enhance image quality
- Acetic acid and iodine reaction timers provide important diagnostic information

SLC-2000B Video Colposcope requires connection of a customer-supplied color video monitor with:

- S-video or video input
- PAL or NTSC mode

Power Supply:

AC power requirements: 100-240VAC, 50/60 Hz

Safety Approval & Quality System:

Safety Standard: IEC60601-1

Quality System: ISO9001 & ISO13485 certified

CE marking according to MDD/93/42/EEC

Specifications

Parameter		Specification
Internal CCD imaging unit		SONY Exview HAD CCD, 530TVL
Light source		Medical-grade, cold LED loop group
Optical magnification		1 – 36X
Effective operating range (working distance)		200 – 300mm, depending on magnification factor
Imaging Mode	Normal imaging mode	<ul style="list-style-type: none"> • Natural light imaging • Spot subtraction imaging • Dim light imaging
	Green filter imaging mode	Electronic green filter (three levels)
	Freeze mode	Picture freeze function
Image labeling mode		Timing and magnification and manual focus / Manual positioning focus mode display
Focus mode		Auto focus/manual focus/manual positioning
Stand type	vertical stand	<ul style="list-style-type: none"> • 4 kg (net weight) • Expanded size: 450mm (L) × 450mm (W) × 1150mm (H) • Folded size: 450mm (L) × 450mm (W) × 900mm (H) • Camera left/right range: 0° – 360° • Camera up/down range: -90° – 45° • Height adjustment range: 0 – 250 mm • Rolling base with five wheels (3 locking)
	swing arm stand	<ul style="list-style-type: none"> • 30 kg (net weight) • Expanded size: 550mm (L) × 1060mm (W) × 1130mm (H) • Folded size: 550mm (L) × 550mm (W) × 750mm (H) • Swing arm range: -150° – 150° • Horizontal arm range: -30° – 30° • Camera left/right range: 0 – 340° • Camera up/down range: -30° – 30° • Height adjustment range: 0 – 380mm • Rolling base with five wheels base (4 locking) • Self-locking

Specifications subject to change without notice.

Shenzhen Goldway Industrial Inc.

Goldway Building, No. 3 Road,
North Section, Shenzhen High-Tech
Industrial Park, Shenzhen,
P.R. China 518057
Tel: +86 755 26980999
Fax: +86 755 26980222
E-mail: goldwaymarketingsupport@philips.com
www.goldwayhealthcare.com
P/N: ENG-SLC2000B-210285-20100901

Distributor :

