

LABO 468 PRO-ACTIVE

according to DIN 13277

Equipment

- 4 shelves
- Forced-air cooling
- Key switch
- Comfortable access
- Automatic defrosting
- Digital temperature display
- Condensate evaporation
- Potential-free contact
- Antifreeze
- Visual and audible alarm signal, even in the case of power failure
- Minimum/maximum temperature memory



PRO-ACTIVE-Features

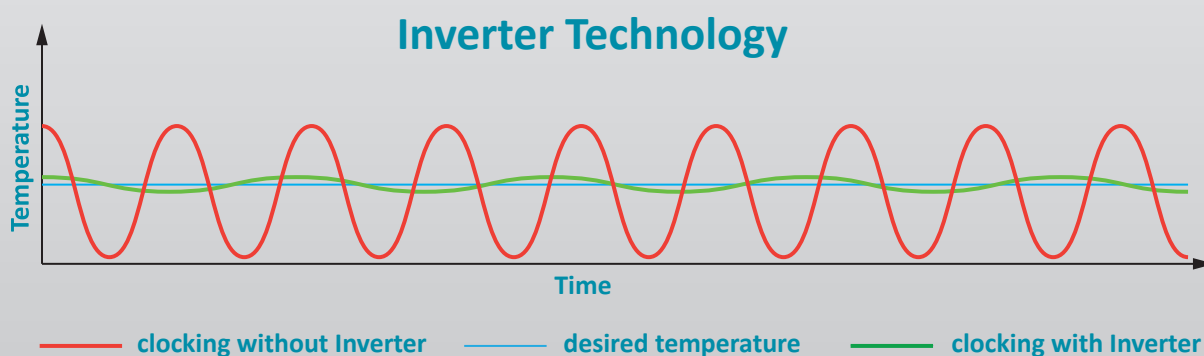
- Faster response time in the event of impending faults thanks to proactive alarms
- Data recording can be read out via USB interface using a USB stick and software
- Minimisation of temperature deviations in the interior
- Maximum storage safety thanks to harmonised components



Compressor with inverter technology

- Environmentally friendly natural refrigerant R600a.
Very low GWP value = 3 (Global Warming Potential)
- Reduction in power consumption by 19 % compared to the previous model (power consumption = 0.808 kWh/24h)
- Extended service life due to demand-orientated power adjustment
- Frequency: 50/60 Hz

If you need further support or have any questions, please contact us.



- **PRO-ACTIVE- Control:** Permanent, proactive monitoring of the performance data and alerts in the case of deviations – so that you can take countermeasures in good time before a fault threatens your chilled goods; world's most accurate temperature control in refrigerated areas thanks to two standard PT-1000 sensors.
- **External housing** made from galvanised sheet steel (rust-proof), with white, anti-scratch powder coating. Length of the plug cable: approx. 2.8 m.
- **Adjustable feet** to compensate uneven floors.
- **Interior made from** smooth aluminium with colourless protective coating. Gibs (every 15mm) for flexible interior arrangement.
- **Interior** can be customised (surcharge may apply). See optional equipment.
- **Extra-thick energy saving insulation**, made from high-quality, compression-moulded and environmentally friendly material.
- **Self-closing door** with easy-to-replace plastic magnetic seal frame, lockable.
- **Door hinge** on the right-hand side (by default, see illustration), or the left-hand side, can be retrofitted.
- **Forced-air cooling**, switches off automatically when you open the door, ensures a uniform temperature and minimizes temperature deviations.
- **Automatic defrosting** with time limit and temperature monitoring.
- **Condensate evaporates** in the refrigerating machine interior.
- **Key switch** protected control panel against tampering. Membrane keyboard with digital temperature display and minimum/maximum temperature memory.
- **Warning functions** with visual and audible alarm signal in the case of temperature deviations or other malfunctions. Door open alarm after 60 seconds.
- **Power failure alarm** (visual and audible alarm), the monitoring unit remains in operation for approx. 30 hours on battery power.
- **Alarms** can be forwarded using a potential-free contact (e.g., to a mobile phone with optional KIRSCH EVOLUTION CLOUD or to a control centre).
- **Data documentation** can be read via USB interface with KIRSCH Datanet software.
- **Antifreeze** against sub-zero temperatures.
- **ventilation-enforced refrigerating machine**, hermetically sealed, energy saving, low-noise, easy to service.

Specification

| | |
|--|--------------------------------|
| Capacity | 460 litres |
| Temperature setting | approx. +0 °C to +15 °C |
| Voltage | 220 – 240 V, 50/60 Hz |
| Power consumption | 75 watts |
| Normal consumption | 0.8 kWh/24 h |
| Admissible ambient temperature | from +10 °C to +38 °C |
| Heat emission (max.) | 197 watts |
| Exterior dimensions (including door handle and distance from wall) | w x d x h = 74 x 77.5 x 189 cm |
| Useable dimensions | w x d x h = 59 x 50 x 116 cm |
| Exterior dimensions with door open at 90° | w x d = 67 x 124 cm |
| Shelf size | w x d = 53 x 39 cm |
| Max. load shelf | 24 kg/40 kg |
| Weight (net./gross) | 113 kg/ 127 kg |
| Temperature deviation | +/-0.5 °C |
| Noise emission | 40 dB(A) |

Optional equipment

KIRSCH refrigerators and freezers offer numerous equipment options that can be retrofitted.



Glass door with lock

See clearly: avoid opening the door unnecessarily to inspect the contents.



Decorative frame

Made of stainless steel, allows to cover door with a decorative panel (thickness max. 2 mm).



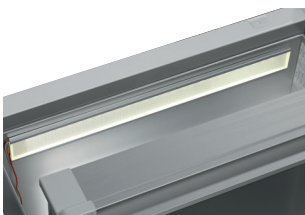
Plastic-drawer on roller runners

Up to 12 drawers are possible in total.



Additional length and cross dividers

for the optimum organisation of your refrigerated goods.



Interior lighting side wall

Optional, optimised and energy-efficient illumination of the interior via LED light strip.



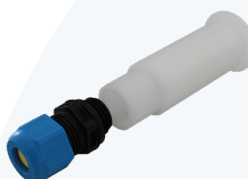
Additional Shelves

Wire shelves, robust with load capacity up to 40 and 50 kg.



Vario Support

Storage shelf on castors.



Access Port

Simple insertion of an external temperature sensor with integrated cable feed-through.



Door coupling

Connects the furniture door to the device.



Castors

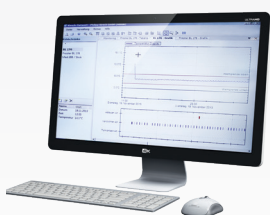
Can be equipped with steering and fixed castors.



Condensation tray

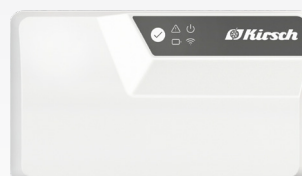
for manual disposal of condensation water.

Accessories for temperature documentation



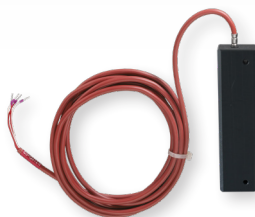
PC-KIT-NET

Automatic temperature documentation and monitoring via your network (LAN connection).



KIRSCH EVOLUTION CLOUD-Module

Maximum storage safety through optimal connectivity and real-time monitoring.



External PT100/PT1000 with cold block

Additional temperature sensor for connection to existing/external monitoring system.



Circular blade temperature recorder

Depending on the model, it is either installed in the machine compartment panel of the refrigerator or freezer or integrated into an additional housing attachment.

* For more information about our cloud, please contact us.